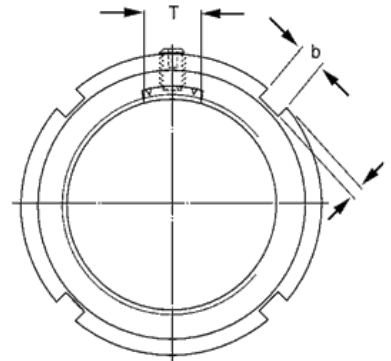
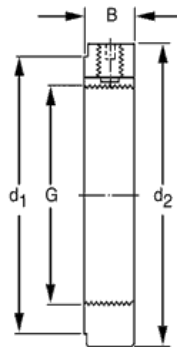


# Precision Lock Nut With Locking Pin KMTA Series



Thread Size  
G=M10x0.75~M100x2



Part Number		Dimensions (mm)							Static Axial Load Carrying Capacity Kn	Grub Screws		Nut Loosening Torque Nm	Mass Kg
Lock Nut	Spanner	G	d1	d2	B	b	h	T		Size	Max. Tightening Torque Nm		
KMK0	-	M10x0.75	16	20	9	3	2	4	9.8	M5	4	6	0.016
KMK1	HN1	M12x1	18	22	9	3	2	4	11.8	M5	4	9	0.018
KMK2	HN2	M15x1	21	25	9	4	2	4	14.6	M5	4	12	0.021
KMK3	HN3	M17x1	24	28	9	4	2	4	19.6	M5	4	13	0.027
KMK4	HN4	M20x1	28	32	9	4	2	4	24	M5	4	16	0.03
KMK5	HN5	M25x1.5	34	38	9	5	2	10	31.5	M5	4	29	0.03
KMK6	HN6	M30x1.5	41	45	9	5	2	10	36.5	M5	4	35	0.06
KMK7	HN7	M35x1.5	48	52	9	5	2	10	50	M5	4	40	0.07
KMK8	HN8	M40x1.5	53	58	11	6	2.5	12	62	M6	8	67	0.11
KMK9	HN9	M45x1.5	60	65	11	6	2.5	12	78	M6	8	76	0.14
KMK10	HN10	M50x1.5	65	70	13	6	2.5	12	91.5	M6	8	84	0.18
KMK11	HN11	M55x2	69	75	13	7	3	12	91.5	M8	18	172	0.19
KMK12	HN12	M60x2	74	80	13	7	3	12	95.5	M8	18	188	0.2
KMK13	HN13	M65x2	79	85	14	7	3	14	108	M8	18	203	0.24
KMK14	HN14	M70x2	85	92	14	8	3.5	14	118	M8	18	219	0.28
KMK15	HN15	M75x2	91	98	14	8	3.5	14	134	M8	18	235	0.33
KMK16	HN16	M80x2	98	105	18	8	3.5	16	173	M8	18	378	0.45
KMK17	HN17	M85x2	103	110	18	8	3.5	16	190	M10	35	401	0.52
KMK18	HN18	M90x2	112	120	18	10	4	16	216	M10	35	425	0.65
KMK19	HN19	M95x2	117	125	20	10	4	16	236	M10	35	448	0.76
KMK20	HN20	M100x2	122	130	20	10	4	16	255	M10	35	472	0.8