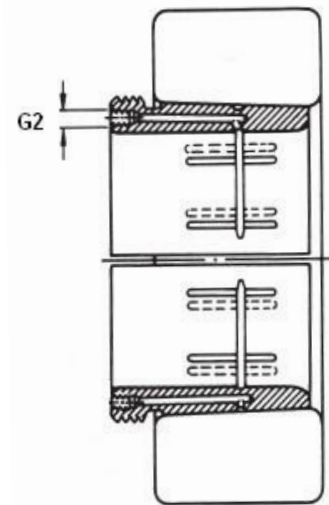
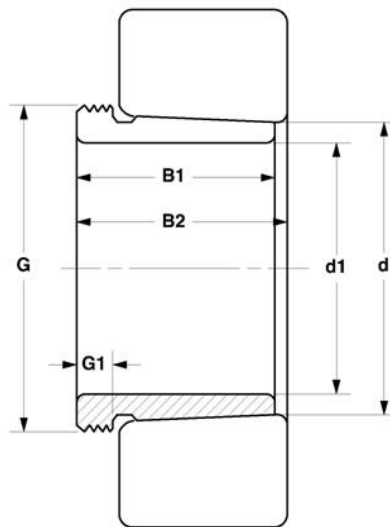


# Hydraulic Withdrawal Sleeves 退卸套

## AH, AHX, AOH Series



Bore Size=320 to 360mm



AOH

MVB	Dimensions (mm)							Weight	Appertaining
Item No.	d <sub>1</sub>	d	B <sub>1</sub>	B <sub>2</sub>	G	G <sub>1</sub>	G <sub>2</sub>	(kg)	Lock Nut
AH3068	320	340	162	171	Tr365x5	28	-	17.5	HML73
AOH3068	320	340	162	171	Tr365x5	28	G1/4	17.5	HML73
AH3168	320	340	225	234	Tr370x5	33	-	26.5	HM74
AOH3168	320	340	225	234	Tr370x5	33	G1/4	26.5	HM74
AH3268	320	340	264	273	Tr370x5	38	-	32	HM74
AOH3268	320	340	264	273	Tr370x5	38	G1/4	32	HM74
AH24068	320	340	206	225	Tr360x5	26	-	18	HM72
AOH24068	320	340	206	225	Tr360x5	26	G1/4	18	HM72
AH24168	320	340	269	288	Tr360x5	26	-	25.5	HM72
AOH24168	320	340	269	288	Tr360x5	26	G1/4	25.5	HM72
AH3072	340	360	167	176	Tr385x5	30	-	19	HML77
AOH3072	340	360	167	176	Tr385x5	30	G/4	19	HML77
AH3172	340	360	229	238	Tr400x5	35	-	30	HM80
AOH3172	340	360	229	238	Tr400x5	35	G1/4	30	HM80
AH3272	340	360	274	283	Tr400x5	40	-	33	HM80
AOH3272	340	360	274	283	Tr400x5	40	G1/4	33	HM80
AH24072	340	360	206	226	Tr380x5	26	-	20	HM76
AOH24072	340	360	206	226	Tr380x5	26	G1/4	20	HM76
AH24172	340	360	269	289	Tr380x5	26	-	26	HM76
AOH24172	340	360	269	289	Tr380x5	26	G1/4	26	HM76
AH3076	360	380	170	180	Tr410x5	31	-	23.5	HML82
AOH3076	360	380	170	180	Tr410x5	31	G1/4	23.5	HML82
AH3176	360	380	232	242	Tr420x5	36	-	38	HM84
AOH3176	360	380	232	242	Tr420x5	36	G1/4	38	HM84
AH3276	360	380	284	294	Tr420x5	42	-	45.5	HM84
AOH3276	360	380	284	294	Tr420x5	42	G1/4	45.5	HM84
AH24076	360	380	208	228	Tr400x5	28	-	23.5	HM80
AOH24076	360	380	208	228	Tr400x5	28	G1/4	23.5	HM80
AH24176	360	380	271	291	Tr400x5	28	-	31	HM80
AOH24176	360	380	271	291	Tr400x5	28	G1/4	31	HM80