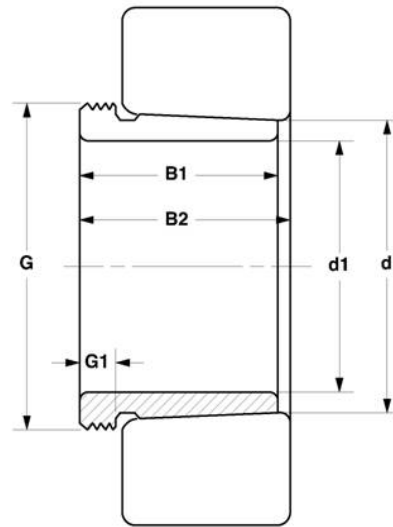


Withdrawal Sleeves 退卸套

AH, AHX Series



Bore Size=160 to 190mm



MVB	Dimensions (mm)						Weight	Appertaining
Item No.	d1	d	B1	B2	G	G ₁	(kg)	Lock Nut
AH234	160	170	69	74	M180×3	16	2.21	KM36
AH334	160	170	93	98	M190×3	17	3.19	KM38
AH2334	160	170	146	152	M190×3	24	5.25	KM38
AH3034	160	170	85	90	M180×3	17	2.45	KM36
AH3134	160	170	104	109	M190×3	16	3.45	KM38
AH3234	160	170	134	140	M190×3	24	4.8	KM38
AH24034	160	170	106	117	M180×3	16	2.7	KM36
AH24134	160	170	125	136	M180×3	16	3.25	KM36
AH236	170	180	69	74	M190×3	16	2.34	KM38
AH2236	170	180	105	110	M200×3	17	3.75	KM40
AH2336	170	180	154	160	M200×3	26	6.05	KM40
AH3036	170	180	92	98	M190×3	17	2.8	KM38
AH3136	170	180	116	122	M200×3	19	4.25	KM40
AH3236	170	180	140	146	M205×3	24	5.25	KM40
AH24036	170	180	116	127	M190×3	16	3.2	KM38
AH24136	170	180	134	145	M190×3	16	3.75	KM38
AH238	180	190	73	78	Tr205×4	17	2.94	KM41
AH2238	180	190	112	117	Tr210×4	18	4.25	KM42
AH2338	180	190	160	167	Tr210×4	26	6.7	KM42
AH3038	180	190	96	102	Tr205×4	18	3.4	KM41
AH3138	180	190	125	131	Tr210×4	20	4.9	KM42
AH3238	180	190	145	152	Tr210×4	25	5.9	KM42
AH24038	180	190	118	131	Tr200×4	18	3.55	KM40
AH24138	180	190	146	159	Tr200×4	18	4.45	KM40
AH240	190	200	77	82	Tr215×4	18	3.12	KM43
AH2240	190	200	118	123	Tr220×4	19	4.7	KM44
AH2340	190	200	170	177	Tr220×4	30	7.6	KM44
AH3040	190	200	102	108	Tr215×4	19	3.85	KM43
AH3140	190	200	134	140	Tr220×4	21	5.65	KM44
AH3240	190	200	153	160	Tr220×4	25	6.6	KM44
AH24040	190	200	127	140	Tr210×4	18	4	KM42
AH24140	190	200	158	171	Tr210×4	18	5.05	KM42