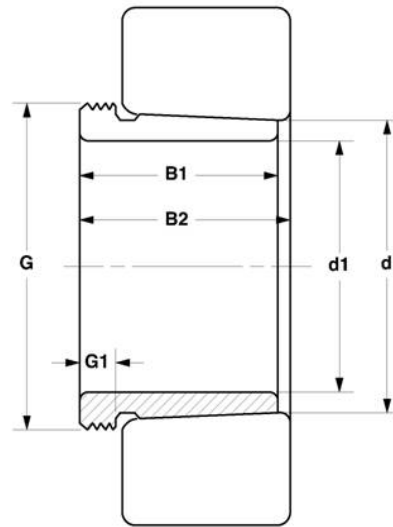


# Withdrawal Sleeves 退卸套

## AH, AHX Series



Bore Size=125 to 150mm



MVB	Dimensions (mm)						Weight	Appertaining
Item No.	d1	d	B1	B2	G	G <sub>1</sub>	(kg)	Lock Nut
AH226	125	130	53	57	M140x2	12	0.82	KM28
AHX326	125	130	74	78	M140x2	14	1.03	KM28
AHX2326	125	130	115	119	M145x2	19	2.00	KM29
AHX3026	125	130	67	71	M140x2	14	0.91	KM28
AHX3126	125	130	78	82	M140x2	12	1.10	KM28
AHX3226	125	130	98	102	M145x2	15	1.55	KM29
AH24026	125	130	83	93	M135x2	14	0.88	KM27
AH24126	125	130	94	104	M140x2	14	1.15	KM28
AH228	135	140	56	61	M150x2	13	1.00	KM30
AHX328	135	140	77	82	M150x2	14	1.15	KM30
AHX2328	135	140	125	130	M155x2	20	2.35	KM31
AHX3028	135	140	68	73	M150x2	14	1.00	KM30
AHX3128	135	140	83	88	M150x2	14	1.30	KM30
AHX3228	135	140	104	109	M155x2	15	1.85	KM31
AH24028	135	140	83	93	M145x2	14	0.95	KM29
AH24128	135	140	99	109	M150x2	14	1.30	KM30
AH230	145	150	60	65	M160x3	14	1.16	KM32
AHX330	145	150	83	88	M165x3	15	1.55	KM33
AHX2330	145	150	135	140	M165x3	24	2.80	KM33
AHX3030	145	150	72	77	M160x3	15	1.15	KM32
AHX3130	145	150	96	101	M165x3	15	1.80	KM33
AHX3230	145	150	114	119	M165x3	17	2.20	KM33
AH24030	145	150	90	101	M155x3	15	1.05	KM31
AH24130	145	150	115	126	M160x3	15	1.55	KM32
AH232	150	160	64	69	M170x3	15	1.91	KM34
AHX322	150	160	88	93	M180x3	16	2.73	KM36
AHX2332	150	160	140	146	M180x3	24	4.65	KM36
AHX3032	150	160	77	82	M170x3	16	2.05	KM34
AHX3132	150	160	103	108	M180x3	16	3.20	KM36
AHX3232	150	160	124	130	M180x3	20	4.00	KM36
AH24032	150	160	95	106	M170x3	15	2.30	KM34
AH24132	150	160	124	135	M170x3	15	3.00	KM34