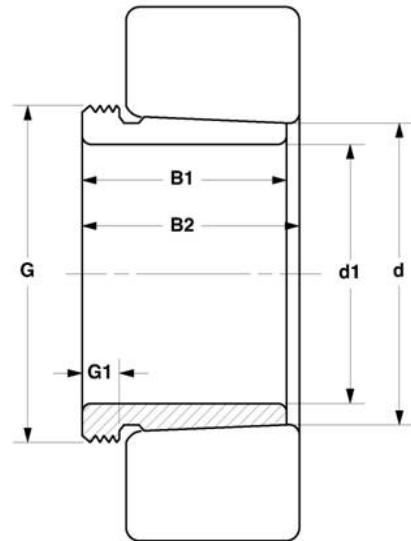


Withdrawal Sleeves 退卸套

AH, AHX Series



Bore Size=85 to 115mm



MVB	Dimensions (mm)						Weight	Appertaining
Item No.	d ₁	d	B ₁	B ₂	G	G ₁	(kg)	Lock Nut
AH218	85	90	40	44	M100x2	9	0.43	KM20
AHX318	85	90	53	57	M100x2	9	0.46	KM20
AHX2318	85	90	79	83	M100x2	14	0.76	KM20
AHX3218	85	90	63	67	M100x2	10	0.57	KM20
AH219	90	95	43	47	M105x2	10	0.49	KM21
AHX319	90	95	57	61	M105x2	10	0.54	KM21
AHX2319	90	95	85	89	M105x2	16	0.90	KM21
AH220	95	100	45	49	M110x2	10	0.53	KM22
AHX320	95	100	59	63	M110x2	10	0.58	KM22
AHX2320	95	100	90	94	M110x2	16	1.00	KM22
AHX3120	95	100	64	68	M110x2	11	0.66	KM22
AHX3220	95	100	73	77	M110x2	11	0.76	KM22
AH222	105	110	50	54	M120x2	11	0.65	KM24
AHX322	105	110	63	67	M120x2	12	0.77	KM24
AHX2322	105	110	98	102	M125x2	16	1.35	KM25
AHX3122	105	110	68	72	M120x2	11	0.76	KM24
AHX3222	105	110	82	86	M125x2	11	1.05	KM25
AH34122	105	110	82	91	M115x2	13	0.71	KM23
AH224	115	120	53	57	M130x2	12	0.65	KM26
AHX324	115	120	69	73	M130x2	13	0.88	KM26
AHX2324	115	120	105	109	M135x2	17	1.65	KM27
AHX3024	115	120	60	64	M130x2	13	0.73	KM26
AHX3124	115	120	75	79	M130x2	12	0.94	KM26
AHX3224	115	120	90	94	M135x2	13	1.30	KM27
AH24024	115	120	73	82	M125x2	13	0.70	KM25
AH24124	115	120	93	102	M130x2	13	1.00	KM26