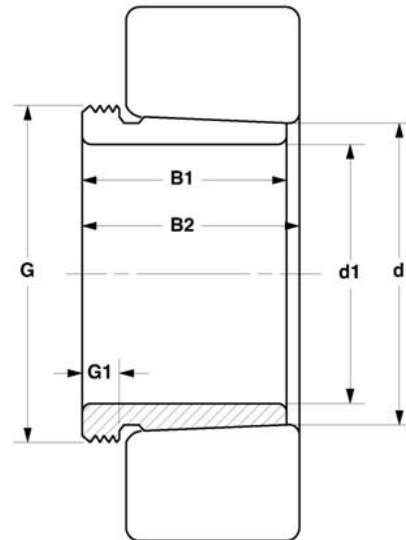


# Withdrawal Sleeves 退卸套

## AH200, AH300, AH2300, AHX2300 Series



Bore Size=12 to 45mm



MVB	Dimensions (mm)						Weight	Appertaining
Item No.	d1	d	B1	B2	G	G <sub>1</sub>	(kg)	Lock Nut
AH208	35	40	25	27	M45×1.5	6	0.08	KM9
AH308	35	40	29	32	M45×1.5	6	0.09	KM9
AH2308	35	40	40	43	M45×1.5	7	0.13	KM9
AH209	40	45	26	29	M50×1.5	6	0.10	KM10
AH309	40	45	31	34	M50×1.5	6	0.12	KM10
AH2309	40	45	44	47	M50×1.5	7	0.16	KM10
AH210	45	50	28	31	M55×2	7	0.12	KM11
AH310	45	50	35	38	M55×2	7	0.13	KM11
AHX2310	45	50	50	53	M55×2	9	0.19	KM11
AH211	50	55	29	32	M60×2	7	0.16	KM12
AH311	50	55	37	40	M60×2	7	0.17	KM12
AHX2311	50	55	54	57	M60×2	9	0.26	KM12
AH212	55	60	32	35	M65×2	8	0.17	KM13
AH312	55	60	40	43	M65×2	8	0.19	KM13
AHX2312	55	60	58	61	M65×2	11	0.30	KM13
AH213	60	65	32.5	36	M75×2	8	0.24	KM15
AH313	60	65	42	45	M75×2	8	0.26	KM15
AHX2313	60	65	61	64	M75×2	12	0.39	KM15
AH214	65	70	33.5	37	M80×2	8	0.26	KM16
AH314	65	70	43	47	M80×2	8	0.28	KM16
AHX2314	65	70	64	68	M80×2	12	0.45	KM16
AH215	70	75	34.5	38	M85×2	8	0.28	KM17
AH315	70	75	45	49	M85×2	8	0.31	KM17
AHX2315	70	75	68	72	M85×2	12	0.53	KM17
AH216	75	80	35.5	39	M90×2	8	0.31	KM18
AH316	75	80	48	52	M90×2	8	0.37	KM18
AHX2316	75	80	71	75	M90×2	12	0.57	KM18
AH217	80	85	38.5	42	M95×2	9	0.36	KM19
AH317	80	85	52	56	M95×2	9	0.43	KM19
AHX2317	80	85	74	78	M95×2	13	0.65	KM19