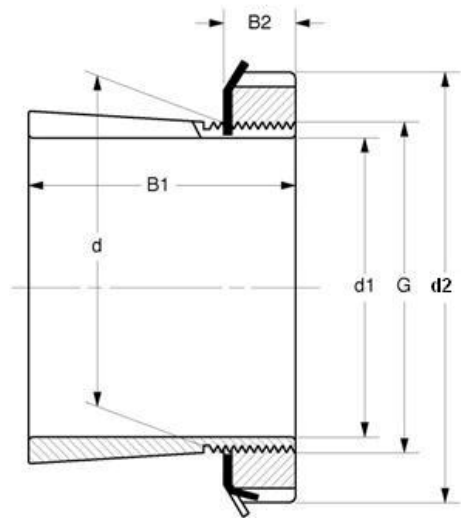


Adapter Sleeves 紧定套

Inch Dimensions SNW Series



Bore Size=5-15/16 to 8"



MVB	Dimensions (in)						Weight	Appertaining Device	
Item No.	d1	d (mm)	d2	B1	B2	G	(kg)	Lock Nut	Lock Washer
SNW3034x5-15/16	5-15/16	170	7-7/8	4.019	1.188	6.659x8/in	6.10	N034	W034
SNW3134x5-15/16	5-15/16	170	7-7/8	4.847	1.188	6.659x8/in	7.30	N034	W034
SNW34x5-15/16	5-15/16	170	8-21/32	4.847	1.219	6.659x8/in	8.85	AN34	W34
SNW134x5-15/16	5-15/16	170	8-21/32	6.188	1.219	6.659x8/in	9.55	AN34	W34
SNW3034x6	6	170	7-7/8	4.019	1.188	6.659x8/in	6.10	N034	W034
SNW3134x6	6	170	7-7/8	4.847	1.188	6.659x8/in	7.30	N034	W034
SNW34x6	6	170	8-21/32	4.847	1.219	6.659x8/in	8.85	AN34	W34
SNW134x6	6	170	8-21/32	6.188	1.219	6.659x8/in	9.55	AN34	W34
SNW3036x6-7/16	6-7/16	180	8-1/4	4.337	1.219	7.066x8/in	6.80	N026	W036
SNW3136x6-7/16	6-7/16	180	8-1/4	5.038	1.219	7.066x8/in	7.75	N026	W036
SNW36x6-7/16	6-7/16	180	9-1/16	5.038	1.250	7.066x8/in	9.30	AN26	W36
SNW136x6-7/16	6-7/16	180	9-1/16	6.456	1.250	7.066x8/in	10.00	AN26	W36
SNW3136x6-1/2	6-1/2	180	8-1/4	5.038	1.219	7.066x8/in	7.75	N026	W036
SNW36x6-1/2	6-1/2	180	9-1/16	5.038	1.250	7.066x8/in	9.30	AN26	W36
SNW3038x6-15/16	6-15/16	190	8-11/16	4.412	1.250	7.472x8/in	7.50	N028	W038
SNW3138x6-15/16	6-15/16	190	8-11/16	5.261	1.250	7.472x8/in	8.95	N028	W038
SNW38x6-15/16	6-15/16	190	9-15/32	5.261	1.281	7.472x8/in	10.50	AN28	W38
SNW138x6-15/16	6-15/16	190	9-15/32	6.758	1.281	7.472x8/in	12.50	AN28	W38
SNW3038x7	7	190	8-11/16	4.412	1.250	7.472x8/in	7.50	N028	W038
SNW3138x7	7	190	8-11/16	5.261	1.250	7.472x8/in	8.95	N028	W038
SNW38x7	7	190	9-15/32	5.261	1.281	7.472x8/in	10.50	AN28	W38
SNW138x7	7	190	9-15/32	6.758	1.281	7.472x8/in	12.50	AN28	W38
SNW3040x7-3/16	7-3/16	200	9-7/16	4.75	1.313	7.847x8/in	8.85	N040	W040
SNW3140x7-3/16	7-3/16	200	9-7/16	5.484	1.313	7.847x8/in	12.90	N040	W040
SNW40x7-3/16	7-3/16	200	9-27/32	5.484	1.344	7.847x8/in	14.00	AN40	W40
SNW140x7-3/16	7-3/16	200	9-27/32	7.095	1.344	7.847x8/in	16.00	AN40	W40
SNW3044x7-15/16	7-15/16	220	10-1/4	5.13	1.375	8.628x8/in	11.00	N044	W044
SNW3144x7-15/16	7-15/16	220	10-1/4	5.901	1.375	8.628x8/in	12.80	N044	W044
SNW44x7-15/16	7-15/16	220	11	5.901	1.406	8.628x8/in	14.50	N44	W44
SNW144x7-15/16	7-15/16	220	11	7.287	1.406	8.628x8/in	21.00	N44	W44
SNW3044x8	8	220	10-1/4	5.13	1.375	8.628x8/in	11.00	N044	W044
SNW3144x8	8	220	10-1/4	5.901	1.375	8.628x8/in	12.80	N044	W044
SNW44x8	8	220	11	5.901	1.406	8.628x8/in	14.50	N44	W44