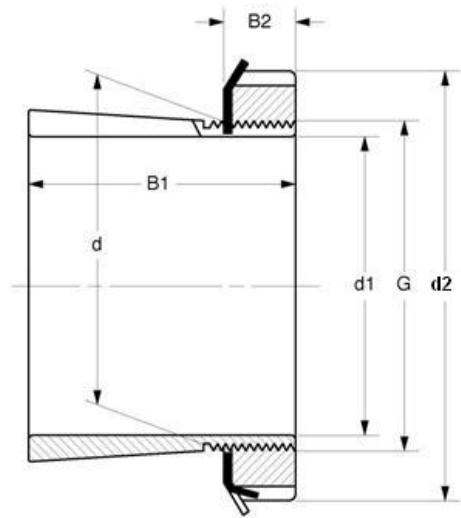


Adapter Sleeves 紧定套

Inch Dimensions SNW Series



Bore Size=4-3/16 to 5-3/4"



| MVB | Dimensions (in) | | | | | | Weight | Appertaining Device | |
|----------------|-----------------|--------|---------|-------|-------|-------------|--------|---------------------|-------------|
| Item No. | d1 | d (mm) | d2 | B1 | B2 | G | (kg) | Lock Nut | Lock Washer |
| SNW3024x4-3/16 | 4-3/16 | 120 | 5-11/16 | 2.947 | 0.938 | 4.716x12/in | 2.80 | N024 | W024 |
| SNW3124x4-3/16 | 4-3/16 | 120 | 5-11/16 | 3.466 | 0.938 | 4.716x12/in | 2.65 | N024 | W024 |
| SNW24x4-3/16 | 4-3/16 | 120 | 6-1/8 | 3.466 | 0.938 | 4.716x12/in | 3.00 | AN24 | W24 |
| SNW124x4-3/16 | 4-3/16 | 120 | 6-1/8 | 4.648 | 0.938 | 4.716x12/in | 3.55 | AN24 | W24 |
| SNW3124x4-1/4 | 4-1/4 | 120 | 5-11/16 | 3.466 | 0.938 | 4.716x12/in | 2.65 | N024 | W024 |
| SNW24x4-1/4 | 4-1/4 | 120 | 6-1/8 | 3.466 | 0.938 | 4.716x12/in | 3.00 | AN24 | W24 |
| SNW3026x4-7/16 | 4-7/16 | 130 | 6-1/8 | 3.237 | 1.000 | 5.106x12/in | 3.40 | N026 | W026 |
| SNW3126x4-7/16 | 4-7/16 | 130 | 6-1/8 | 3.762 | 1.000 | 5.106x12/in | 3.80 | N026 | W026 |
| SNW26x4-7/16 | 4-7/16 | 130 | 6-3/4 | 3.762 | 1.000 | 5.106x12/in | 4.40 | AN26 | W26 |
| SNW126x4-7/16 | 4-7/16 | 130 | 6-3/4 | 4.982 | 1.000 | 5.106x12/in | 5.65 | AN26 | W26 |
| SNW3026x4-1/2 | 4-1/2 | 130 | 6-1/8 | 3.237 | 1.000 | 5.106x12/in | 3.40 | N026 | W026 |
| SNW3126x4-1/2 | 4-1/2 | 130 | 6-1/8 | 3.762 | 1.000 | 5.106x12/in | 3.80 | N026 | W026 |
| SNW26x4-1/2 | 4-1/2 | 130 | 6-3/4 | 3.762 | 1.000 | 5.106x12/in | 4.40 | AN26 | W26 |
| SNW3026x4-7/16 | 4-7/16 | 140 | 6-1/2 | 3.34 | 1.063 | 5.497x12/in | 3.80 | N028 | W28 |
| SNW3126x4-7/16 | 4-7/16 | 140 | 6-1/2 | 3.981 | 1.063 | 5.497x12/in | 4.00 | N028 | W28 |
| SNW26x4-7/16 | 4-7/16 | 140 | 7-3/32 | 3.981 | 1.063 | 5.497x12/in | 4.75 | AN28 | W28 |
| SNW126x4-7/16 | 4-7/16 | 140 | 7-3/32 | 5.323 | 1.063 | 5.497x12/in | 5.90 | AN28 | W28 |
| SNW3026x4-1/2 | 4-1/2 | 140 | 6-1/2 | 3.34 | 1.063 | 5.497x12/in | 3.85 | N028 | W028 |
| SNW3126x4-1/2 | 4-1/2 | 140 | 6-1/2 | 3.981 | 1.063 | 5.497x12/in | 4.00 | N028 | W028 |
| SNW26x4-1/2 | 4-1/2 | 140 | 7-3/32 | 3.981 | 1.063 | 5.497x12/in | 4.75 | AN28 | W28 |
| SNW3030x5-3/16 | 5-3/16 | 150 | 7-1/8 | 3.492 | 1.094 | 5.888x12/in | 4.45 | N030 | W030 |
| SNW3130x5-3/16 | 5-3/16 | 150 | 7-1/8 | 4.241 | 1.094 | 5.888x12/in | 6.20 | N030 | W030 |
| SNW30x5-3/16 | 5-3/16 | 150 | 7-11/16 | 4.241 | 1.125 | 5.888x12/in | 7.25 | AN30 | W30 |
| SNW130x5-3/16 | 5-3/16 | 150 | 7-11/16 | 5.621 | 1.125 | 5.888x12/in | 8.15 | AN30 | W30 |
| SNW30x5-1/4 | 5-1/4 | 150 | 7-11/16 | 4.241 | 1.125 | 5.888x12/in | 7.25 | AN30 | W30 |
| SNW3032x5-7/16 | 5-7/16 | 160 | 7-1/2 | 3.711 | 1.156 | 6.284x8/in | 5.45 | N032 | W032 |
| SNW3132x5-7/16 | 5-7/16 | 160 | 7-1/2 | 4.578 | 1.156 | 6.284x8/in | 6.10 | N032 | W032 |
| SNW32x5-7/16 | 5-7/16 | 160 | 8-1/16 | 4.578 | 1.187 | 6.284x8/in | 7.05 | AN32 | W32 |
| SNW132x5-7/16 | 5-7/16 | 160 | 8-1/16 | 5.92 | 1.187 | 6.284x8/in | 8.15 | AN32 | W32 |
| SNW32x5-3/4 | 5-3/4 | 160 | 8-1/16 | 4.578 | 1.187 | 6.284x8/in | 7.05 | AN32 | W32 |