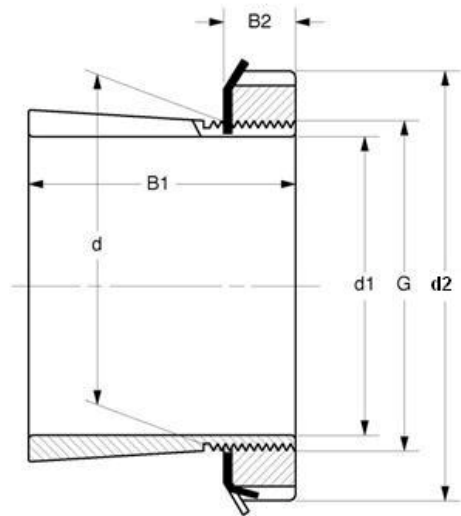


Adapter Sleeves 紧定套

Inch Dimensions SNW Series



Bore Size=2 to 4"



MVB	Dimensions (in)						Weight	Appertaining Device	
Item No.	d1	d (mm)	d2	B1	B2	G	(kg)	Lock Nut	Lock Washer
SNW13x2	2	65	3-3/8	2.1	0.625	2.548x18/in	0.64	N13	W13
SNW13x2-3/16	2-3/16	65	3-3/8	2.1	0.625	2.548x18/in	0.64	N13	W13
SNW13x2-1/4	2-1/4	65	3-3/8	2.1	0.625	2.548x18/in	0.64	N13	W13
SNW13x2-5/16	2-5/16	65	3-3/8	2.1	0.625	2.548x18/in	0.64	N13	W13
SNW113x2-3/16	2-3/16	65	3-3/8	2.771	0.625	2.548x18/in	0.79	N13	W13
SNW113x2-1/4	2-1/4	65	3-3/8	2.771	0.625	2.548x18/in	0.79	N13	W13
SNW15x2-3/8	2-3/8	75	3-7/8	2.296	0.665	2.933x12/in	1.10	AN15	W15
SNW15x2-7/16	2-7/16	75	3-7/8	2.296	0.665	2.933x12/in	1.10	AN15	W15
SNW115x2-7/16	2-7/16	75	3-7/8	3.08	0.665	2.933x12/in	1.35	AN15	W15
SNW16x2-11/16	2-11/16	80	4-5/32	2.376	0.665	3.137x12/in	1.10	AN16	W16
SNW16x2-3/4	2-3/4	80	4-5/32	2.376	0.665	3.137x12/in	1.10	AN16	W16
SNW116x2-11/16	2-11/16	80	4-5/32	3.204	0.665	3.137x12/in	1.45	AN16	W16
SNW17x2-15/16	2-15/16	85	4-13/32	2.486	0.697	3.340x12/in	1.30	AN17	W17
SNW17x3	3	85	4-13/32	2.486	0.697	3.340x12/in	1.30	AN17	W17
SNW117x3	3	85	4-13/32	3.312	0.697	3.340x12/in	1.55	AN17	W17
SNW117x2-15/16	2-15/16	85	4-13/32	3.312	0.697	3.340x12/in	1.55	AN17	W17
SNW18x3-3/16	3-3/16	90	4-21/32	2.646	0.782	3.527x12/in	1.40	AN18	W18
SNW18x3-1/4	3-1/4	90	4-21/32	2.646	0.782	3.527x12/in	1.40	AN18	W18
SNW118x3-3/16	3-3/16	90	4-21/32	3.553	0.782	3.527x12/in	1.40	AN18	W18
SNW19x3-5/16	3-5/16	95	4-15/16	2.76	0.813	3.730x12/in	1.85	AN19	W19
SNW119x3-5/16	3-5/16	95	4-15/16	3.072	0.813	3.730x12/in	2.00	AN19	W19
SNW20x3-7/16	3-7/16	100	5-3/16	2.869	0.844	3.918x12/in	2.00	AN20	W20
SNW20x3-1/2	3-1/2	100	5-3/16	2.869	0.844	3.918x12/in	2.00	AN20	W20
SNW120x3-1/2	3-1/2	100	5-3/16	3.971	0.844	3.918x12/in	2.85	AN20	W20
SNW120x3-7/16	3-7/16	100	5-3/16	3.971	0.844	3.918x12/in	2.85	AN20	W20
SNW21x3-11/16	3-11/16	105	5-7/16	2.987	0.844	4.122x12/in	2.05	AN21	W21
SNW22x3-11/16	3-11/16	110	5-23/32	3.206	0.906	4.325x12/in	2.25	AN22	W22
SNW22x3-15/16	3-15/16	110	5-23/32	3.206	0.906	4.325x12/in	2.25	AN22	W22
SNW122x3-15/16	3-15/16	110	5-23/32	4.348	0.906	4.325x12/in	2.95	AN22	W22
SNW22x4	4	110	5-23/32	3.206	0.906	4.325x12/in	2.25	AN22	W22