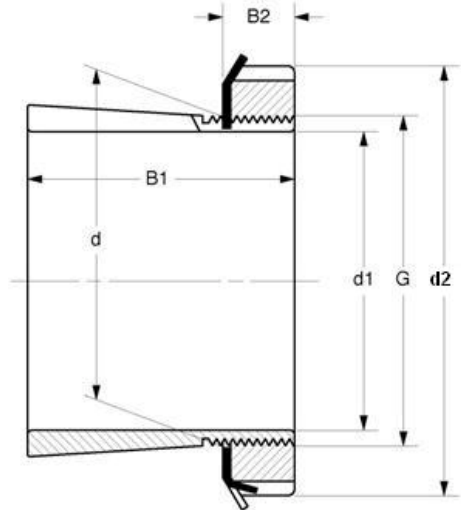


# Adapter Sleeves 紧定套



Inch Shaft Size HA3000, HE3000, HS3000, HA2300, HE2300, HS2300, HA3100, HE3100, HS3100 Series

Bore Size=4-3/16 to 4-15/16"



MVB	Dimensions (mm)						Weight	Appertaining Device	
Item No.	d1 (in)	d	d2	B1	B2	G	(kg)	Lock Nut	Lock Washer
HA3024	4-3/16	120	145	72	22	M120x2	2.00	KML24	MBL24
HA3124L		120	145	88	22	M120x2	2.69	KML24	MBL24
HA3124		120	155	88	22	M120x2	2.80	KM24	MB24
HA2324L		120	145	112	22	M120x2	3.35	KML24	MBL24
HA2324		120	155	112	22	M120x2	3.35	KM24	MB24
HE3024	4-1/4	120	145	72	22	M120x2	2.00	KML24	MBL24
HE3124		120	155	88	22	M120x2	2.57	KM24	MB24
HE3124L		120	145	88	22	M120x2	2.57	KML24	MBL24
HE2324		120	155	112	22	M120x2	3.14	KM24	MB24
HE2324L		120	145	112	22	M120x2	3.14	KML24	MBL24
HS3024	4-3/8	120	145	72	22	M120x2	1.93	KML24	MBL24
HS3124		120	155	88	22	M120x2	2.40	KM24	MB24
HS2324		120	155	112	22	M120x2	3.19	KM24	MB24
HA3026	4-7/16	130	155	80	23	M130x2	2.85	KML26	MBL26
HA3126		130	165	92	23	M130x2	3.75	KM26	MB26
HA3126L		130	155	92	23	M130x2	3.75	KML26	MBL26
HA2326		130	165	121	23	M130x2	4.75	KM26	MB26
HE3026	4-1/2	130	155	80	23	M130x2	2.78	KML26	MBL26
HE3126		130	165	92	23	M130x2	3.50	KM26	MB26
HE3126L		130	155	92	23	M130x2	3.50	KML26	MBL26
HE2326		130	165	121	23	M130x2	4.50	KM26	MB26
HS3028	4-7/8	140	165	82	24	M140x2	3.16	KML28	MBL28
HS3128		140	180	97	24	M140x2	4.20	KM28	MB28
HS2328		140	180	131	24	M140x2	5.50	KM28	MB28
HA3028	4-15/16	140	165	82	24	M140x2	3.00	KML28	MBL28
HA3128		140	180	97	24	M140x2	4.10	KM28	MB28
HA3128L		140	165	97	24	M140x2	4.10	KML28	MBL28
HA2328		140	180	131	24	M140x2	5.30	KM28	MB28