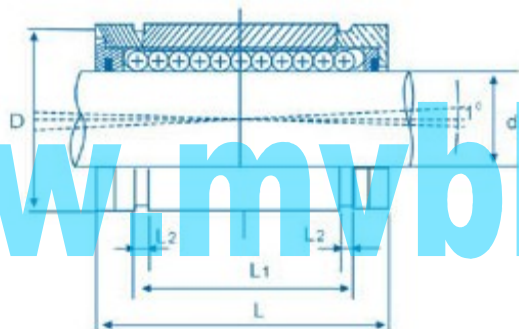


Super Linear Motion Bearings-Linear Ball Busings 超级直线轴承

LMES..UUOP Series



Self-Aligning Linear Bushing



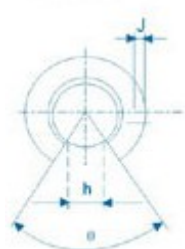
LMES12-OP



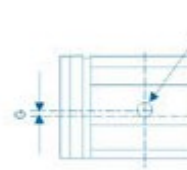
LMES16-OP LMES20-OP



LMES25-OP



LMES30-OP LMES40-OP LMES50-OP



www.mvbbearing.com

标准型 Standard Type LMES...OP	密封型 Sealed Type LMES..UUOP	钢球列数 Ball circuit	重量 Weight (g)	dr 公称轴径 Nominal shaft dia. mm	主要尺寸和公差 Major dimensions and tolerance(mm)								额定负荷 Basic load rating	
					D ¹⁾	L	L ₂ min	h	θ	F	G	J	动负荷 Dynamic C N	静负荷 Static Co N
					mm	mm	mm	mm	(°)	mm	mm	mm		
LMES 12OP	LMES 12UUOP	4	18	12	22	32	1.35	6.5	66	3	—	0.7	1290	1260
LMES 16OP	LMES 16UUOP	4	22	16	26	36	1.35	9	68		—	0.7	1640	1320
LMES 20OP	LMES 20UUOP	5	51	20	32	45	1.65	9	55		—	0.9	2630	1720
LMES 25OP	LMES 25UUOP	5	102	25	40	58	1.9	11.5	57		1.5	1.4	3910	2850
LMES 30OP	LMES 30UUOP	5	155	30	47	68	1.9	14	57		2	2.2	4850	2900
LMES 40OP	LMES 40UUOP	5	300	40	62	80	2.2	19.5	56		1.5	2.7	6700	5900
LMES 50OP	LMES 50UUOP	5	480	50	75	100	2.7	22.5	54		2.5	2.3	11700	8100

1) Based on nominal housing bore