

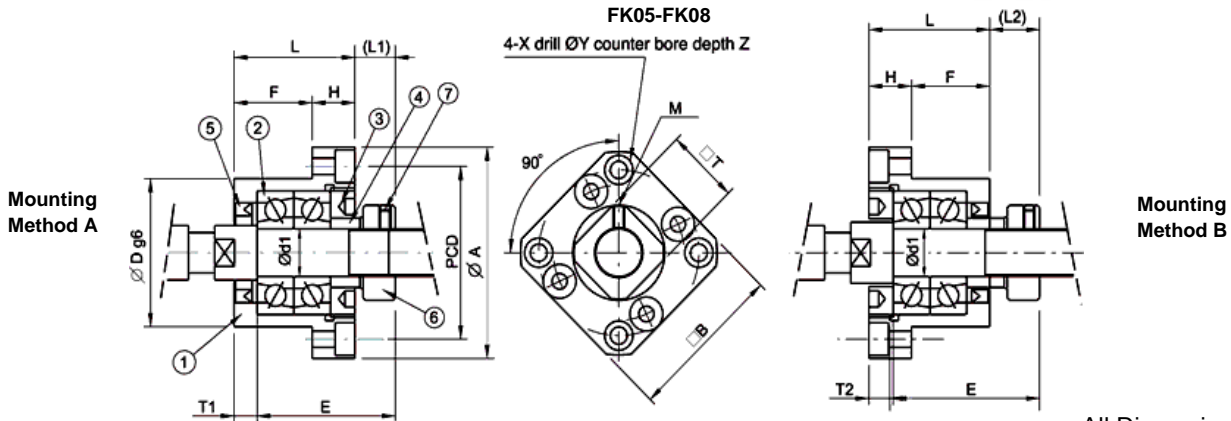
Ball Screw Support 滚珠丝杠支撑座

FK Series Fixed Side Rectangular Type



Assembly consists of:

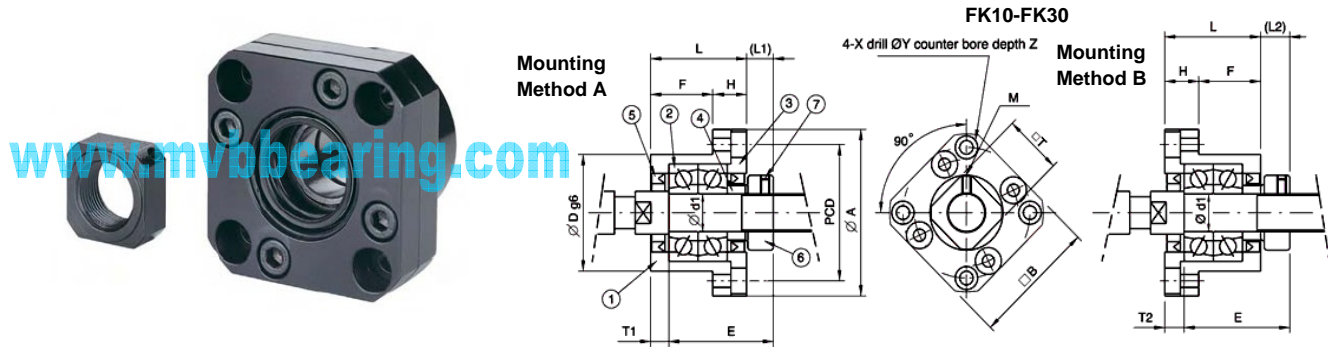
Item No.	Part Name	Quantity
1	Housing	1
2	Bearing	1 set
3	Holding Lid	1
4	Collar	2
5	Seal	1 (2)
6	Lock Nut	1
7	Hexagon Socket Head Setscrew (with set piece)	1



All Dimensions in mm

Part Number	Shaft Dia. d1	L	H	F	E	D	A	PCD	B	Mounting Method A		Mounting Method B		X	Y	Z	M	T	Bearing No.	
										L1	T1	L2	T2							
										FK05	5	16.5	6							10.5
FK06	6	20	7	13	22	22	-0.007 +0.020	36	28	28	5.5	3.5	8.5	6.5	3.4	6.5	4	M3.0	12	606ZZ
FK08	8	23	9	14	26	28	-0.007 +0.020	43	35	35	7	4	10	7	3.4	6.5	4	M3.0	14	608ZZ

*Note:
For light axial loads only, as bearing used is deep groove and not angular contact. Axial clearance is 0.03mm



Part Number	Shaft Dia. d1	L	H	F	E	D	A	PCD	B	Mounting Method A		Mounting Method B		X	Y	Z	M	T	
										L1	T1	L2	T2						
										FK10	10	27	10						17
FK12	12	27	10	17	29.5	36	-0.009 +0.025	54	44	44	7.5	5	8.5	6	4.5	8	4	M3	19
FK15	15	32	15	17	36	40	-0.009 +0.025	63	50	52	10	6	12	8	5.5	9.5	6	M3	22
FK20	20	52	22	30	50	57	-0.01 +0.029	85	70	68	8	10	12	14	6.6	11	10	M4	30
FK25	25	57	27	30	60	63	-0.01 +0.029	98	80	79	13	10	20	17	9	15	13	M5	35
FK30	30	62	30	32	61	75	-0.01 +0.029	117	95	93	11	12	17	18	11	17.5	15	M6	40

Features

- Do not disassemble the support unit
- When inserting a screw shaft into the support unit, take care to prevent peeling the oil-seal lip
- The bearing is filled with grease
- After inserting the fixed side support unit, lock the lock nut using the set piece and hexagon socket head setscrew

MVB Power-Star Bearing Industry Co., Ltd.

Tel: +86-592-523 0986 Fax: +86-592-376 1975

Url: www.mvbbearing.com

Email: vivy@mvbbearing.com ; mvbbearing@gmail.com